



34 Clarence Road, Stony Stratford  
£400,000



# 34 Clarence Road

Stony Stratford, Milton Keynes

This property comes with a garage and off road parking! \*\*\*This listing features an interactive report showing in depth information about this property including local schools, transport links, internet speeds, phone signal and much more\*\*\*

Council Tax band: C

Tenure: Freehold

- Detached Garage with Electric Roller Door
- Off Road Parking
- Small Basement Area
- UPVC Double Glazing
- Gas Central Heating
- 5 Minute Walk to High Street
- Nearest Primary School - 300m
- Wolverton Train Station - 1.8 Miles
- Ultrafast 1000mb Internet Available
- Council Tax Band C







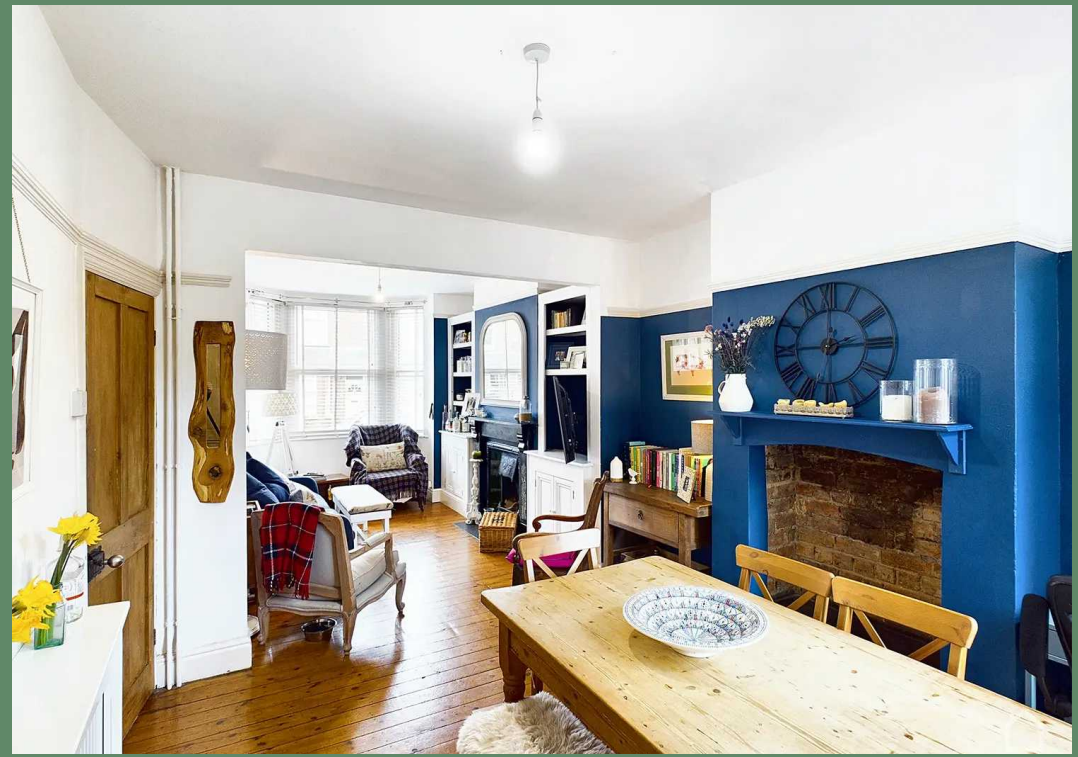




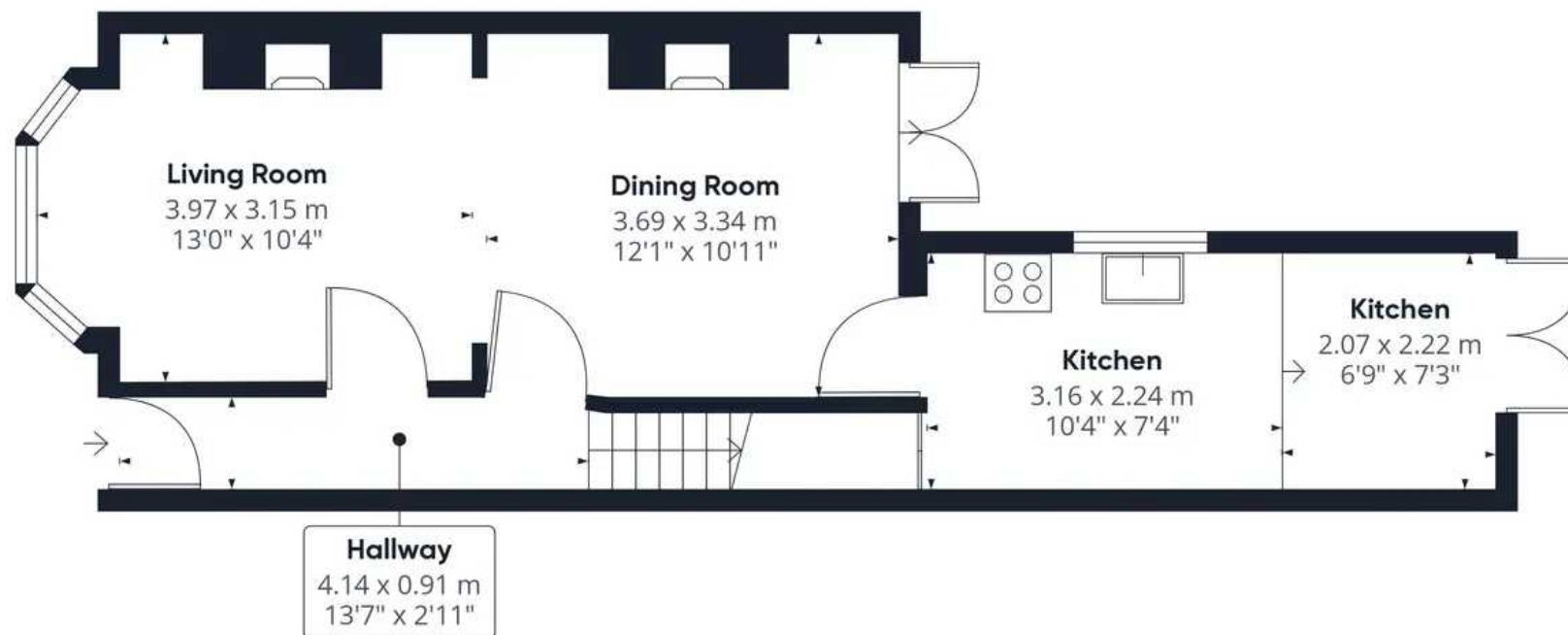












Floor 0 Building 1

Approximate total area<sup>0</sup>

80.34 m<sup>2</sup>

864.83 ft<sup>2</sup>



Floor 1 Building 1

Excluding balconies and terraces

While every attempt has been made to ensure accuracy, all measurements are approximate, not to scale. This floor plan is for illustrative purposes only.

GIRAFFE 360





# Stratfords Residential Sales & Lettings Ltd

Stratfords Residential Lettings Ltd, 36 Wharfside - MK2 2AZ

01908 630 100

[info@stratfords.co.uk](mailto:info@stratfords.co.uk)

[www.stratfords.co.uk/](http://www.stratfords.co.uk/)