



## 5 Haydock Close, Bletchley

Guide Price £510,000

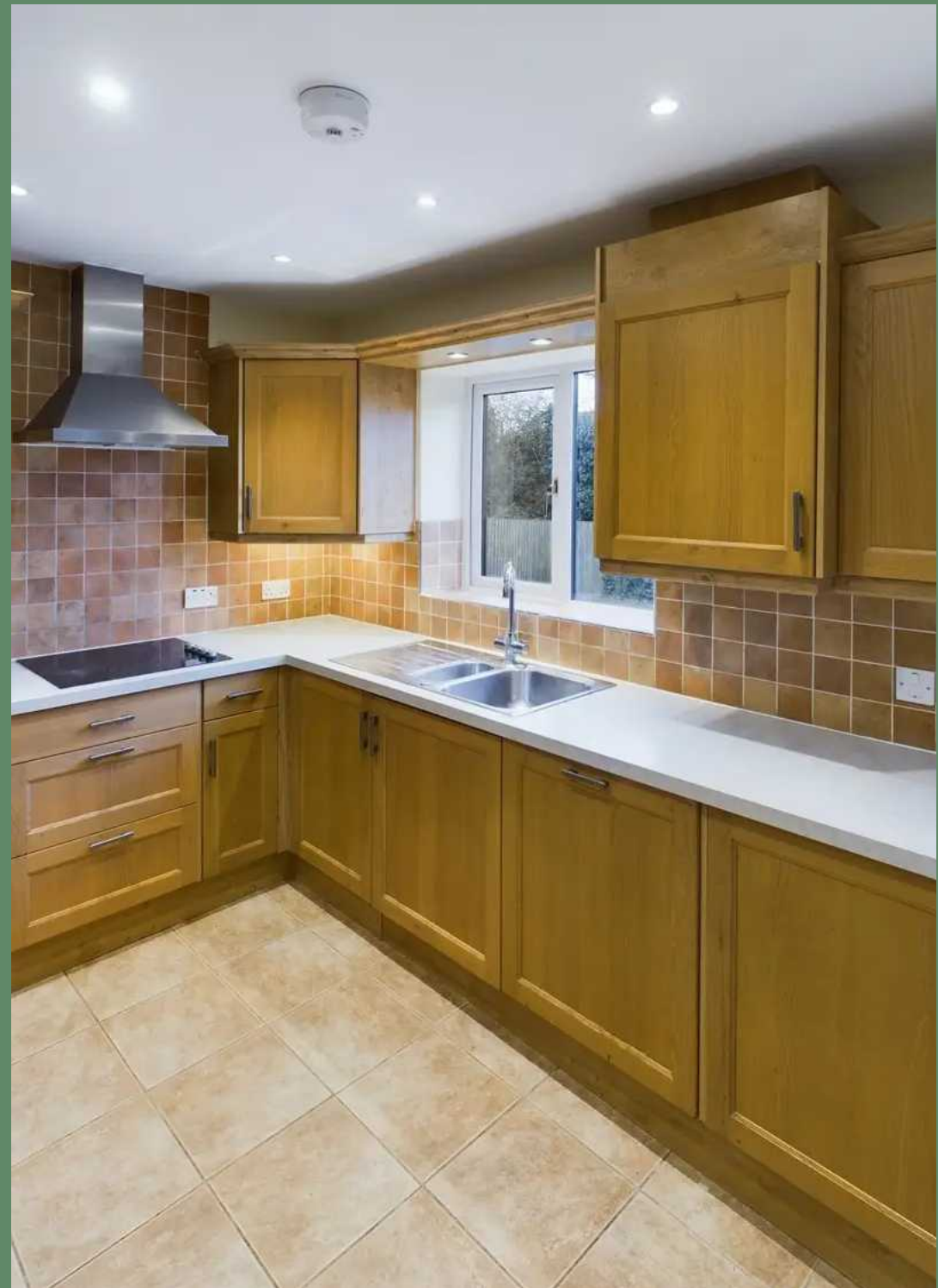
# 5 Haydock Close

Bletchley, Milton Keynes

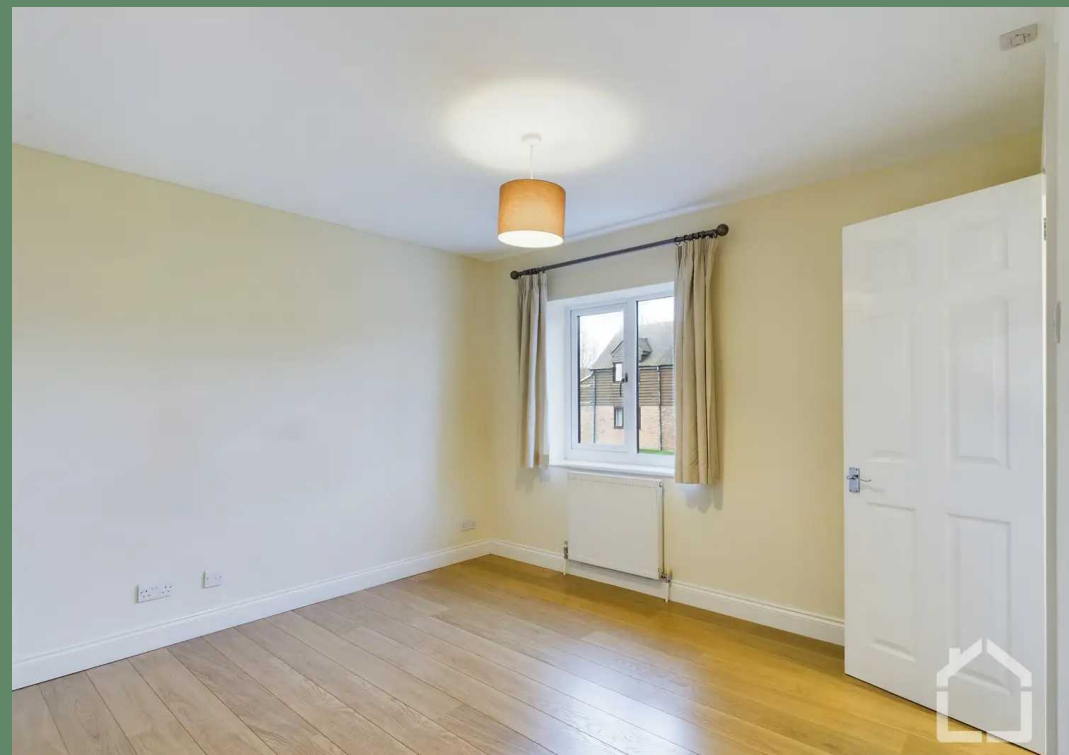
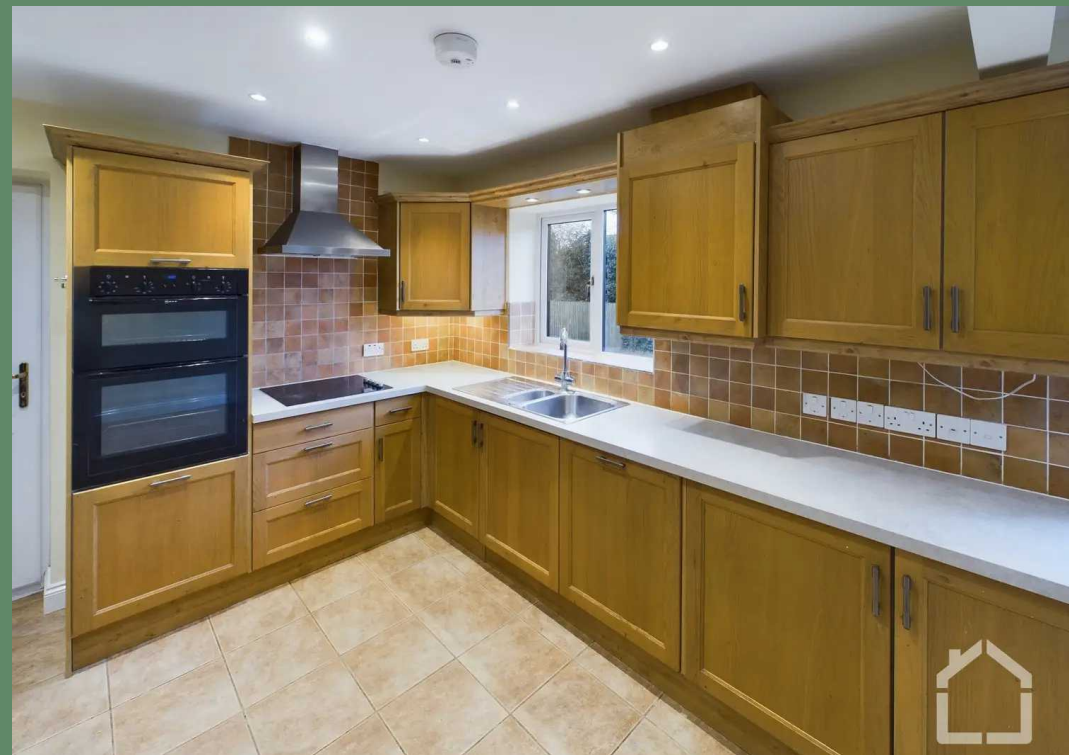
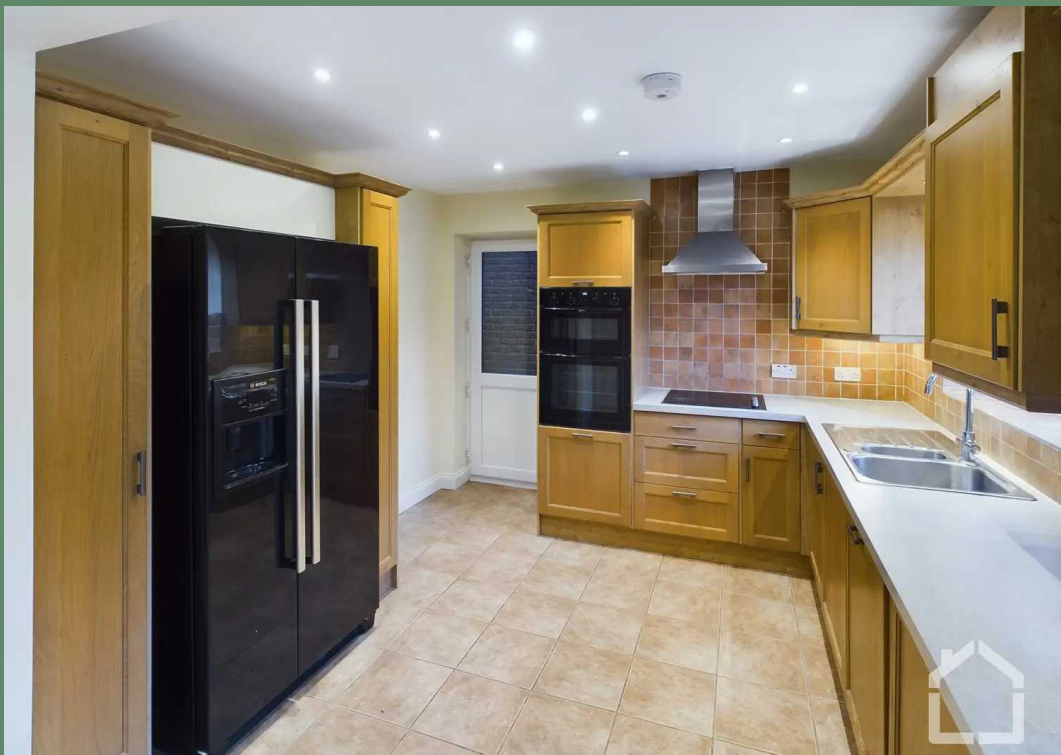
Council Tax band: E

Tenure: Freehold

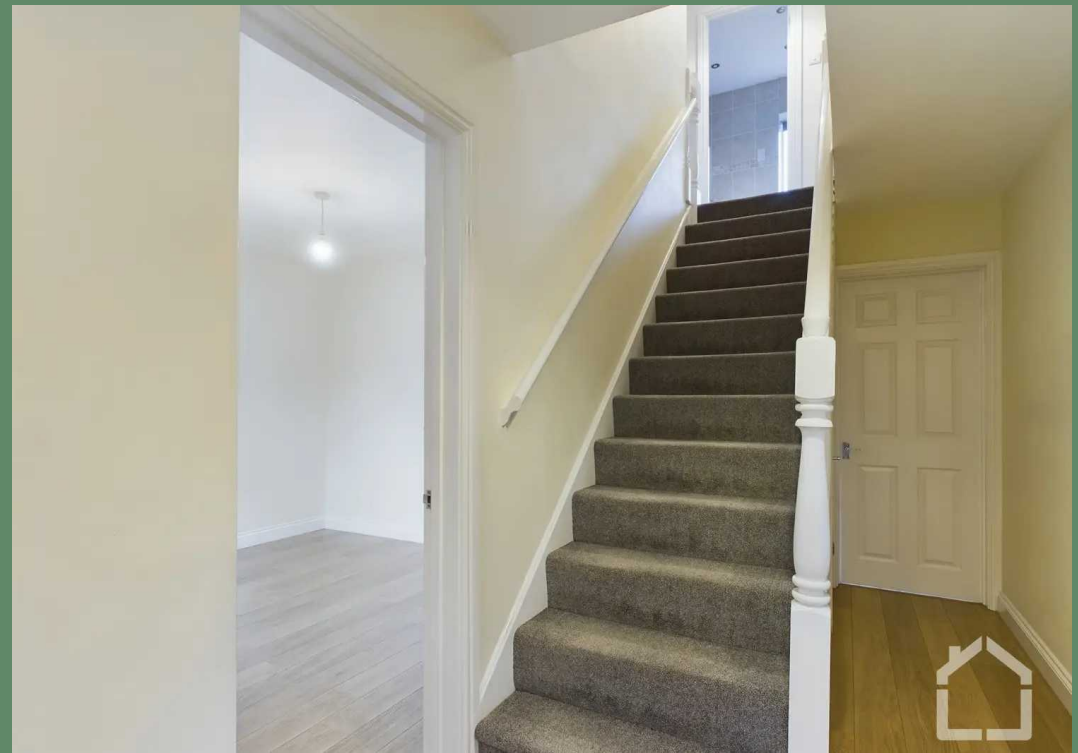
- Four Bedroom Detached Family Home
- Double Garage With Ample Off Road Parking
- Approx 2 Miles to Bletchley Train Station
- Two Reception Rooms
- Master Bedroom with En Suite
- No Forward Chain
- Energy Performance Rating: C
- Council Tax Band: E











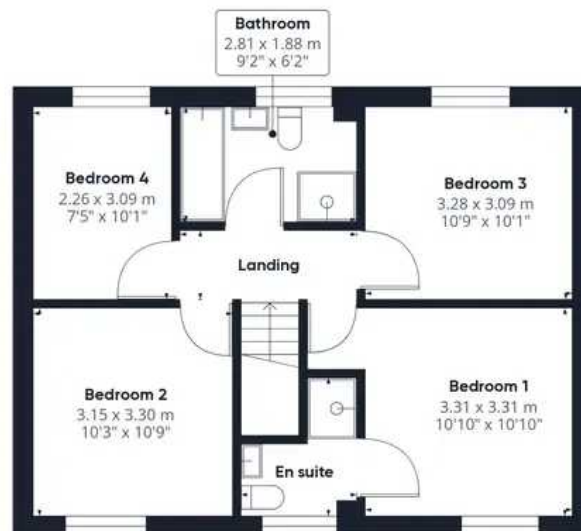


Floor 0 Building 1

Approximate total area<sup>0</sup>

110.04 m<sup>2</sup>

1184.46 ft<sup>2</sup>



Floor 1 Building 1

Excluding balconies and terraces

While every attempt has been made to ensure accuracy, all measurements are approximate, not to scale. This floor plan is for illustrative purposes only.

GIRAFFE 360



## Stratfords Residential Sales & Lettings Ltd

Stratfords Residential Lettings Ltd, 36 Wharfside - MK2 2AZ

01908 630 100

[info@stratfords.co.uk](mailto:info@stratfords.co.uk)

[www.stratfords.co.uk/](http://www.stratfords.co.uk/)